

Flexi8

the leading
software
for sign making



formerly Scanvec Amiable

You asked for it, we deliver!

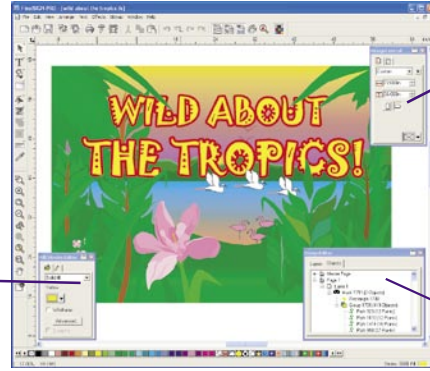
The industry standard for Sign Making software, SAI's Flexi™ Family 8 continues to offer your Sign Making business innovative tools with very profitable results. By integrating finely tuned technology with years of feedback from our Sign Making partners and users, Flexi Family 8 maintains its status as the number one choice for dependable, feature-rich Sign Making software with uncompromising quality.

Flexi8

Smart, Easy and Powerful

Intuitive software leads to productivity you can measure. To accelerate your learning process our entire user interface is built around your task workflow and thought process. Featuring SmartObjects and Smart Tools, Flexi Family 8 is geared to boost your daily productivity.

Gradients, fills and strokes are defined with ease through Flexi 8's Fill/Stroke Editor.

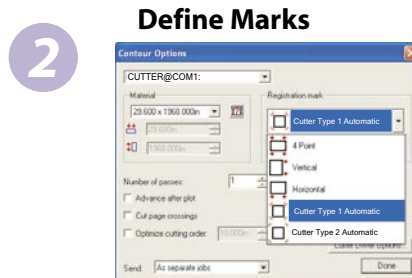
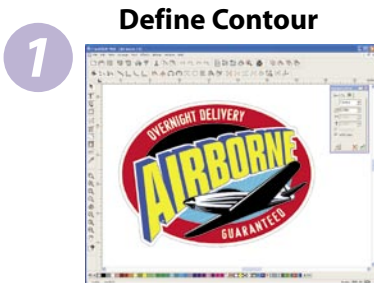


DesignCentral is the heart of Flexi 8's interactive menu system, with options automatically changing based on the item currently selected.

Users can easily navigate between objects, groups and layers with DesignEditor.

Print & Cut, Made Quick, Easy and Accurate

Print your image, and contour cut the decal on any printer/cutter combination, or on a hybrid device. Our special 4-point alignment system will account for possible media skew or distortion, and produce accurate cuts of any length. Flexi 8 also supports the automatic sensing capability of the latest cutter models, for ideal, perfect output.



Gerber® Support

Flexi 8 includes enhanced features specifically designed for Gerber EDGE users. Now EDGE, EDGE 2, and EDGE FX users can design, print, and cut to most any combination of devices directly from Flexi 8 (PC only).

In addition to Flexi's many enhancements geared for the Gerber user, it is now possible to directly import PLT files from Gerber Graphix Advantage™ and Gerber Omega™.

Export as Adobe® PDF

With the new PDF Export option in Flexi 8, you can make industry standard proofs by exporting your projects as PDFs.

Need to e-mail proofs to your customers? File parameters can easily be set to fit any piece of paper.



PC Platform

Interface and features are available for the PC platform only for 8.0v2; Supporting the latest operating system: Windows XP.

Workspace Control

Users of other software packages will appreciate Flexi 8's workspace control, which lets them make Flexi look and feel like Omega™, CorelDRAW®, Adobe®, and many more.

True Adobe® RIP Engine

Flexi 8 is the only solution on the market that seamlessly integrates the latest genuine Adobe RIP Engine, guaranteeing accuracy, reliability and compatibility.



Become a Certified Flexi Expert!

Our famous Training and Education curriculum is carefully designed to take you on the fastest path to productivity and profitability. With seminars, tutorials and interactive materials, all programs are informative and entertaining. Covering basic through advanced features and functionality, our training materials will make sure you meet your goals and leverage our software's capabilities into your business' success.

Flexi™ Family 8 line of products... The Heart of Every Successful Sign Making Business:

FlexiSIGN-PRO™ - The SAI flagship product, offers the total solution for any Sign Making business. With genuine Adobe® PostScript® 3 RIP engine, ICC profile support and built-in direct drivers, FlexiSIGN-PRO offers a complete set of design, cutting, RIPing and printing tools for maximum productivity.

FlexiEXPERT™ - The package for the professional sign maker who requires advanced vinyl cutting and bitmap editing tools, without color-printing output. FlexiEXPERT includes full design, text serialization and color tracing features, as well as job estimating for accurate project management and design templates for faster production.



The most powerful Vectorization and Cleanup Engine on the market.

FlexiPRINT & CUT™ - A brand-new design, scanning and tracing software package with complete cutting output. FlexiPRINT & CUT has the versatility to RIP and print to two devices simultaneously. Text Styles and Job Statistics are also included for impeccable results.

FlexiSIGN™ - The mid-level Sign Making package provides exceptional tools to produce high-quality signage without a large initial investment. In addition to design, vinyl cutting, scanning and tracing capabilities, FlexiSIGN also includes Job Statistics and Text Styles for enhanced performance.

FlexiLETTER™ - The entry-level layout and cutting package, features file import/export, full text manipulation and direct drivers for the industry's most popular vinyl cutters.



FlexiDESIGNER™ - A program you can use as a second, design-only station. Get all the design, layout and image editing features of FlexiSIGN-PRO, as well as file preparation for output on another Flexi Family station, without the full price investment.

Flexi8

Top 30 Features

	FlexiSIGN-PRO	FlexiEXPERT	FlexiPRINT & CUT	FlexiSIGN	FlexiLETTER	FlexiDESIGNER
DesignCentral Interactive Window	✓	✓	✓	✓	✓	✓
DesignEditor Interactive Window	✓	✓	New	✓		✓
Fill / Stroke Interactive Window	✓	✓	✓	✓	✓	✓
Workspace Profiles	✓	✓	✓	✓	✓	✓
Import & Export Standard File Formats	Improved	Improved	Improved	Improved	Improved	Improved
Export as Adobe® PDF	New	New	New	New	New	New
On Screen Spell Check	New	New	New	New	New	New
True Shape Nesting	✓	Optional	Optional	Optional	Optional	Optional
Send To EnRoute	Improved	Improved	Improved	Improved	Improved	Improved
TrueType and Type 1 Font Support	✓	✓	✓	✓	✓	✓
AutoTrace Vectorization	✓	✓	New	✓		✓
ColorTrace Vectorization	✓	✓				✓
Distortions	✓	✓	✓	✓	✓	✓
Job Information	Improved	Improved	✓	✓	✓	Improved
Job Estimation with Estimation Editor	✓	✓				✓
Templates with Template Editor	Improved	Improved				Improved
Auto Serialize Variable Data	✓	✓				✓
Graphic / Text Styles	✓	✓	New	✓		
Gradients - Spot Color, RGB, CMYK	✓	✓	New	✓		✓
Color Trapping	✓	✓	New	✓		✓
Underbase / Finisher	✓					✓
Adobe® Plug In Filter Support	Improved					Improved
Smooth Screen Display	New	New	New	New	New	New
Mask/Unmask	✓	New	New	New	New	✓
ICC Profile Creation	✓		Optional			
Utilize 3rd Party Output Profiles	✓		✓			
Select by Attribute	✓	✓	New	New	New	✓
Desktop Printing Output	Improved	Improved	Improved	Improved	Improved	Improved
Cutting Output	Improved	Improved	Improved	Improved	Improved	
Adobe® PostScript® 3	Improved		Improved			

POWERED BY:

**For more Information or to
Request a Demonstration, Please Contact:**

gretagmacbeth



Flexi, FlexiSIGN-PRO, FlexiEXPERT, FlexiPRINT & CUT, FlexiSIGN, FlexiLETTER and FlexiDESIGNER are trademarks of SAI;
Gerber EDGE, EDGE, EDGE 2, Omega, Graphix Advantage and Spectratone are registered trademarks of Gerber Scientific, Inc.;
Pantone and other Pantone, Inc. trademarks are the property of Pantone, Inc.;
Adobe and PostScript are registered trademarks of Adobe Systems, Inc.;
All other trademarks are the property of their respective owners.

©2006 SAI. All Rights Reserved.



formerly Scanvec Amiable

SAI International Plaza Two, Suite 625 Philadelphia, PA 19113-1518 USA
Toll Free: 800-229-9068 Tel: 610-521-6300 Fax: 610-521-0111
E-mail: info@SAintl.biz Website: www.SAintl.biz

SAI Europe Minervastraat 14 bis B-1930 Zaventem, Belgium
Tel: +32-2-725-5295 Fax: +32-2-725-2809
E-mail: info@SAintl.be

SAI UK 1 The Courtyards Croxley Business Park Watford WD18 8YH
United Kingdom
Tel: +44-(0)-1923-690-890 Fax: +44-(0)-1923-690-899
E-mail: Info@SAintl.biz