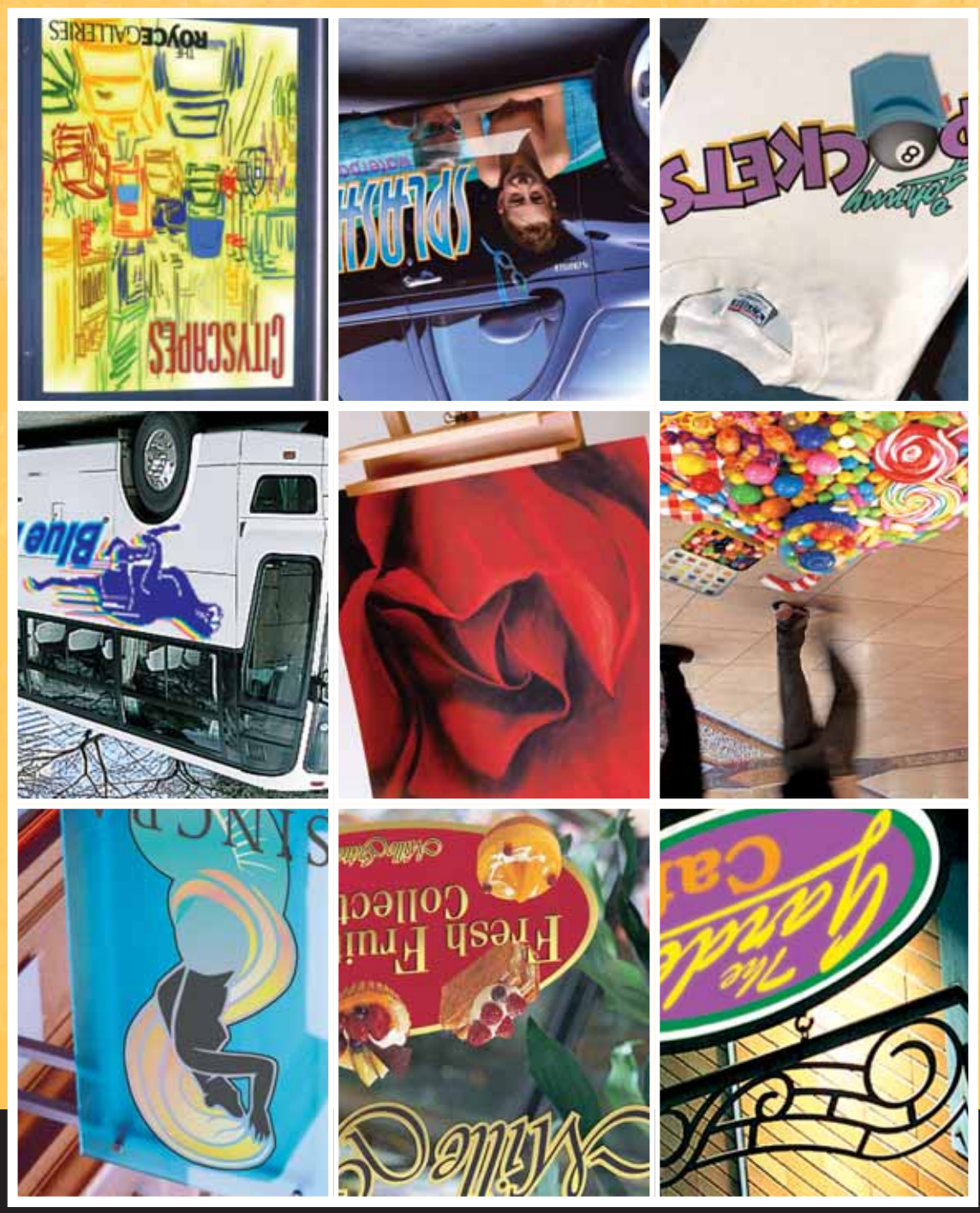


SO FI D D

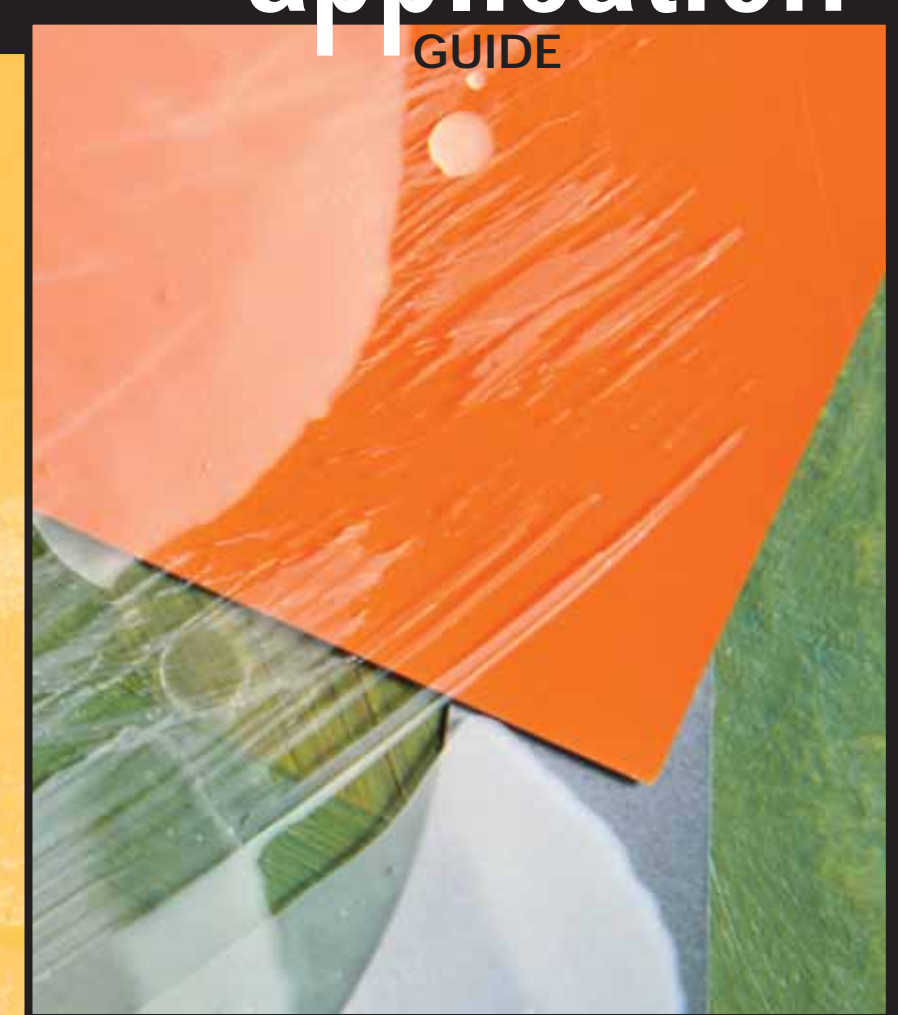
If you want to get the most out of your Roland inkjet printer, make sure you're using Roland's high-performance ink and media. It's your assurance that the media has been carefully tested, profiled and certified to provide accurate and consistent results every time.

We offer a wide range of media, from fine art papers to backlit film and from durable outdoor vinyl to heat transfer material. Each one has been optimized for the various print speeds and capabilities of Roland printers, taking full advantage of the superior performance of our advanced mild solvent, pigment and dye-based ink sets.

No matter what type of project you're printing, Roland inks and media provide the perfect starting point.



MEDIA application GUIDE



"The first print out of my Roland machine was right on the money, and it was amazing. The possibilities were flying around in my head – labels, packaging, truck lettering, site signs, see-through window lettering, banners and even t-shirt transfers. All with excellent, high-quality Roland ink and media at photo-quality resolution."



Dan Antonelli is president/creative director of Graphic D-Signs in Washington, New Jersey. He also writes for SignCraft Magazine.

Roland[®]
Built with precision. Backed with passion.[®]

Roland[®]
Built with precision. Backed with passion.[®]

ROLAND DGA CORPORATION
15363 Barranca Pkwy., Irvine, California 92618-2216
800/542-2307 ■ 949/727-2100 ■ Fax 949/727-2112
www.rolanddga.com/media

Certified ISO 9001:2000
RDGA-MEDIA-2 August 2005

